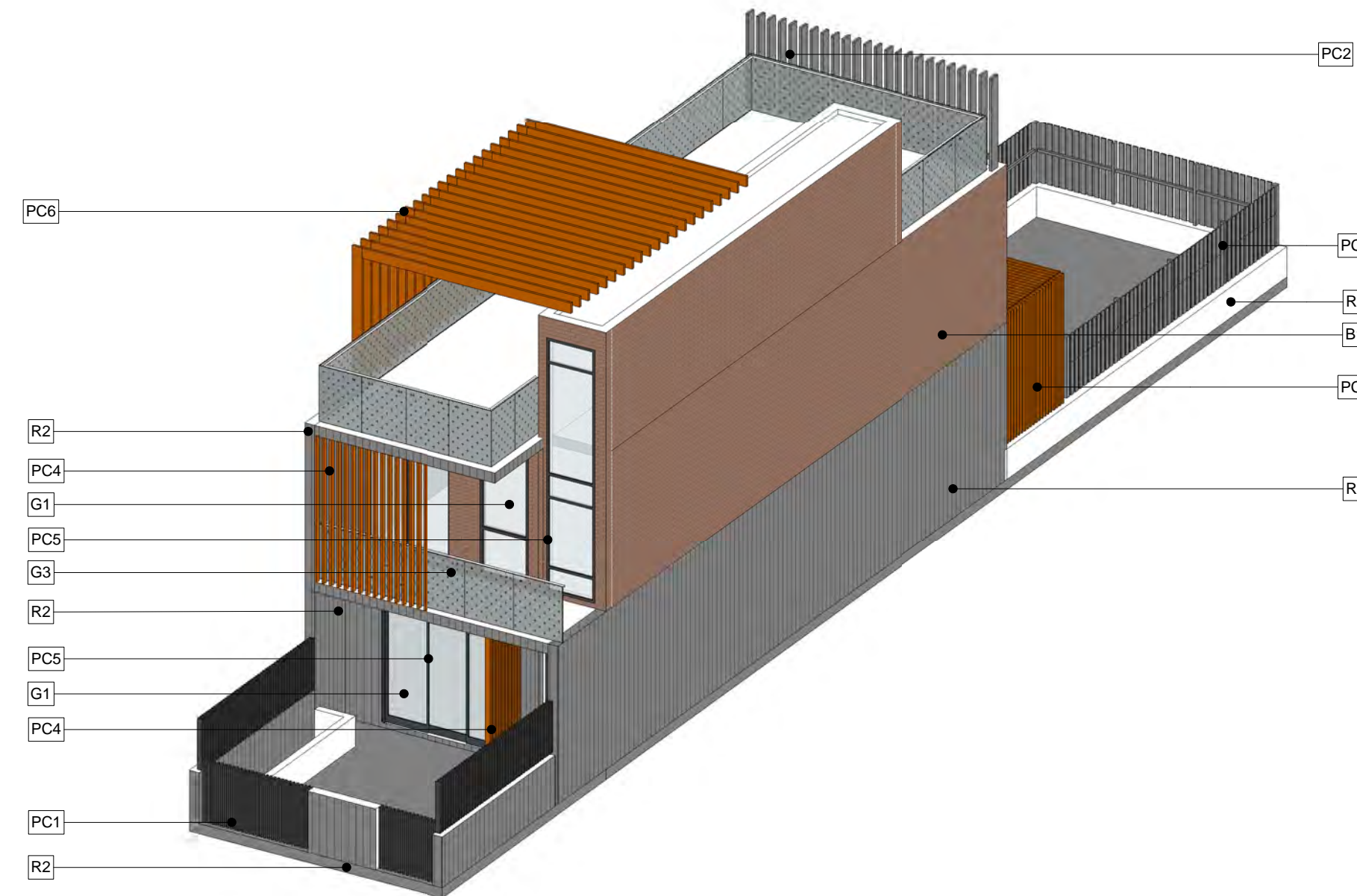
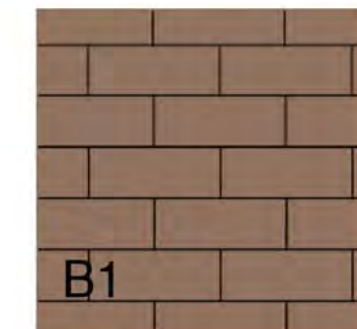


BUILDING E _3D VIEW_SOUTH EAST



TOWNHOUSE TYPE M _3D VIEW_NORTH WEST



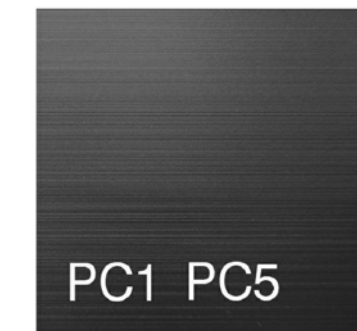
B1



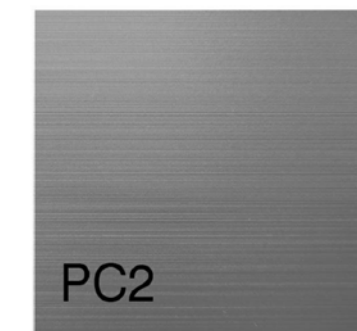
G1 G2
CLEAR TOUGHENED
GLASS



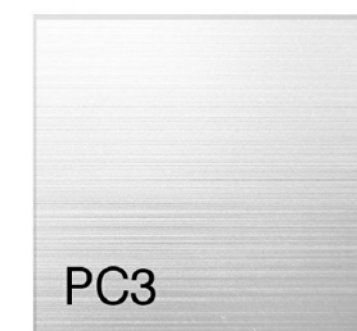
G3
OPAQUE TOUGHENED
GLASS



PC1 PC5
POWDER COATED
ALUMINIUM - DARK
GREY



PC2
POWDER COATED
ALUMINIUM - LIGHT
GREY



PC3
POWDER COATED
ALUMINIUM - OFF WHITE



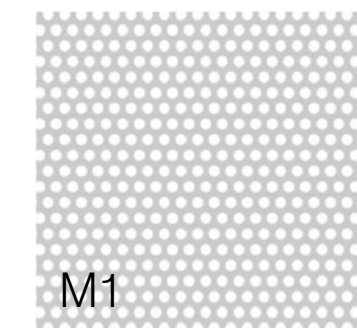
PC4 PC6
POWDER COATED
ALUMINIUM - TIMBER
TEXTURE



R1
RENDER PAINT
OFF WHITE

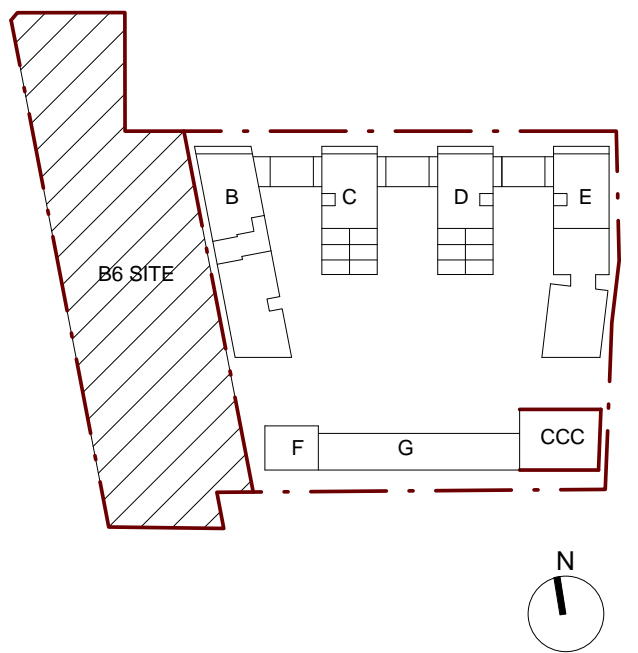


R2
RENDER PAINT
LIGHT GREY



M1
ALUMINIUM MESH
PANEL - WHITE FINISH
FRAME

Key Plan:



GENERAL ABBREVIATIONS

B1	FACE BRICK OR SIMILAR
G1	WINDOW GLAZING CLEAR SET GLASS
G2	BALUSTRADE GLAZING CLEAR TOUGHENED GLASS
G3	BALUSTRADE GLAZING OPAQUE TOUGHENED GLASS
PC1	ALUMINIUM SLAT - POWDER COATED ALUMINIUM - DARK GREY OR SIMILAR
PC2	LOUVER - POWDER COATED ALUMINIUM - LIGHT GREY OR SIMILAR
PC3	LOUVER - POWDER COATED ALUMINIUM - OFF WHITE OR SIMILAR
PC4	LOUVRE - POWDER COATED ALUMINIUM TIMBER TEXTURE OR SIMILAR
PC5	WINDOW FRAME - POWDER COATED ALUMINIUM - DARK GREY OR SIMILAR
PC6	PERGOLA - POWDER COATED ALUMINIUM - TIMBER TEXTURE OR SIMILAR
R1	RENDER AND PAINT FINISH - OFF WHITE
R2	RENDER AND PAINT FINISH - LIGHT GREY
M1	ALUMINIUM MESH PANEL - WHITE PAINT - OR SIMILAR

No.	Amendment	Date
1	PRELIMINARY ISSUE FOR COORDINATION	2016.10.21
2	PRELIMINARY ISSUE FOR COORDINATION	2016.11.11
3	ISSUE FOR COORDINATION	2016.12.06
4	DA SUBMISSION	2016.12.09
5	ISSUE FOR INFORMATION FOR COUNCIL RFI	2017.07.14

Client:

JQZ
Commercial 3,
1 Belmore Street Burwood
NSW, 2134



T +612 9378 1000
F +612 9745 2666

PTW Architects

Level 13, 9 Castlereagh St
Sydney NSW Australia 2000



T +612 9232 5877
F +612 9221 4139

NSW Nominated Architects
S Parsons Architect No. 8068
D Jones Architect No. 4778
A Parker Architect No. 6078
A Risse Architect No. 5057

Do not scale from drawings.
Verify all dimensions on site before commencing work.
Copying or reproduction of this drawing is strictly prohibited without the consent of Proline Thorne & Walker Pty. Ltd.
The Architect shall not be liable for any loss or claims whatsoever arising from or in respect of any error or omission resulting from data transferred from the computer system of the Architect to systems of the Client or other Consultants.
The recipient of the data shall be responsible for checking accuracy and completeness of data received.
Any use of the electronic data in part or whole shall be at the users risk.
The CAD files and their contents are solely representations of the Project information and cannot be relied upon beyond the representation shown on the PDF versions of the drawings as provided by the Architect.

Project:
152-200 and 202-206 Rocky Point
Road Kogarah

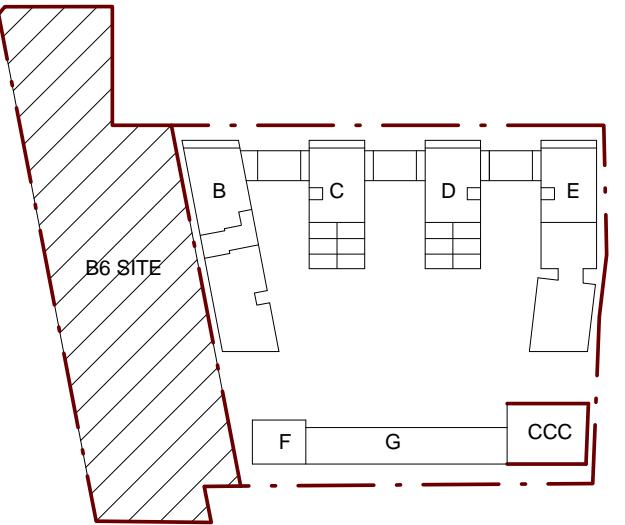
Title:
DA COLOUR SAMPLE BOARD

Scale: NTS @A1 Date: 14/07/17 Job No: PA012984

Dwg No: DA-700 Revision: 5

Status:
DEVELOPMENT APPLICATION

Key Plan:



COORD.
SYSTEM MGA

GENERAL ABBREVIATIONS

- B1 FACE BRICK OR SIMILAR
G1 WINDOW GLAZING CLEAR SET GLASS
G2 BALUSTRADE GLAZING CLEAR TOUGHENED GLASS
G3 BALUSTRADE GLAZING OPAQUE TOUGHENED GLASS
M1 ALUMINIUM MESH PANEL - WHITE PAINT OR SIMILAR
PC1 ALUMINIUM SLAT - POWDER COATED ALUMINIUM - DARK GREY OR SIMILAR
PC2 LOUVER - POWDER COATED ALUMINIUM - LIGHT GREY OR SIMILAR
PC3 LOUVER - POWDER COATED ALUMINIUM - OFF WHITE OR SIMILAR
PC4 LOUVRE - POWDER COATED ALUMINIUM TIMBER TEXTURE OR SIMILAR
PC5 WINDOW FRAME - POWDER COATED ALUMINIUM - DARK GREY OR SIMILAR
PC6 PERGOLA - POWDER COATED ALUMINIUM - TIMBER TEXTURE OR SIMILAR
R1 RENDER AND PAINT FINISH - OFF WHITE
R2 RENDER AND PAINT FINISH - LIGHT GREY

No.	Amendment	Date
1	PRELIMINARY ISSUE FOR COORDINATION	2016.10.21
2	PRELIMINARY ISSUE FOR COORDINATION	2016.11.11
3	ISSUE FOR COORDINATION	2016.12.06
4	DA SUBMISSION	2016.12.09
5	ISSUE FOR INFORMATION FOR COUNCIL RFI	2017.07.14

Client:
JQZ
Commercial 3,
1 Belmore Street Burwood
NSW, 2134



T +612 9378 1000
F +612 9745 2666

PTW Architects
Level 13, 9 Castlereagh St
Sydney NSW Australia 2000



T +612 9232 5877
F +612 9221 4139

NSW Nominated Architects
S Parsons Architect No. 8008
D Jones Architect No. 4778
A Parker Architect No. 6578
A Rossi Architect No. 5057

Do not scale from drawings.
Verify all dimensions on site before commencing work.
Copying or reproduction of this drawing is strictly prohibited without the consent of
Produce Theory & Walker Pty. Ltd.
The Architect shall not be liable for any loss or claims whatsoever arising from or in
respect of any errors or omissions resulting from data transferred from the
computer system of the Architect to systems of the Client or other Consultants.
The recipient of the data shall be responsible for checking accuracy and completeness
of data received.
Any use of the electronic data in part or whole shall be at the users risk.
The CAD files and their contents are solely representations of the Project information
and cannot be relied upon beyond the representation shown on the PDF versions of the
drawings as provided by the Architect.

Project:
152-200 and 202-206 Rocky Point
Road Kogarah

Title:
FACADE ELEVATIONS (BUILDING B)

0 1 2 5 8m

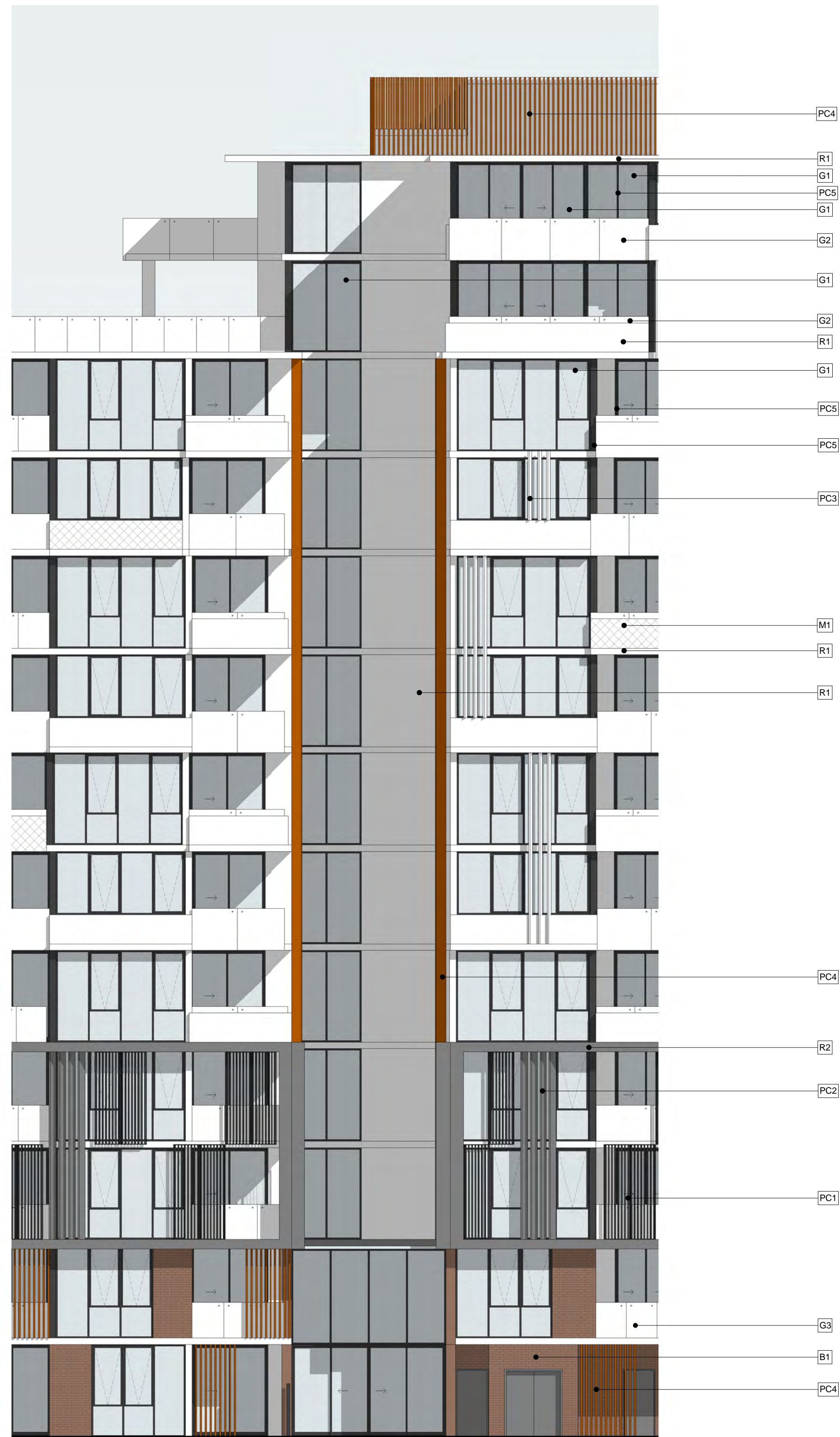
Scale:
1:100 @A1 Date:
14/07/17 Job No:
PA012984

Dwg No:
DA-710 Revision:
5

Status:
DEVELOPMENT APPLICATION



01_FACADE ELEVATION-BUILDING B_WEST



02_FACADE ELEVATION-BUILDING B_EAST



01_FACADE ELEVATION-BUILDING E.WEST



02_FACADE ELEVATION-BUILDING E.EAST

Key Plan:

COORD.
SYSTEM MGA

GENERAL ABBREVIATIONS

B1

FACE BRICK OR SIMILAR

G1

WINDOW GLAZING CLEAR SET GLASS

G2

BALUSTRADE GLAZING CLEAR
TOUGHENED GLASS

G3

BALUSTRADE GLAZING OPAQUE
TOUGHENED GLASS

M1

ALUMINIUM MESH PANEL - WHITE PAINT
OR SIMILAR

PC1

ALUMINIUM SLAT - POWDER COATED
ALUMINIUM - DARK GREY OR SIMILAR

PC2

LOUVER - POWDER COATED ALUMINIUM
- LIGHT GREY OR SIMILAR

PC3

LOUVER - POWDER COATED ALUMINIUM
- OFF WHITE OR SIMILAR

PC4

LOUVRE - POWDER COATED ALUMINIUM
TIMBER TEXTURE OR SIMILAR

PC5

WINDOW FRAME - POWDER COATED
ALUMINIUM - DARK GREY OR SIMILAR

PC6

PERGOLA - POWDER COATED
ALUMINIUM - TIMBER TEXTURE OR
SIMILAR

R1

RENDER AND PAINT FINISH - OFF WHITE

R2

RENDER AND PAINT FINISH - LIGHT
GREY

No.	Amendment	Date
1	PRELIMINARY ISSUE FOR COORDINATION	2016.10.21
2	PRELIMINARY ISSUE FOR COORDINATION	2016.11.11
3	ISSUE FOR COORDINATION	2016.12.06
4	DA SUBMISSION	2016.12.09
5	ISSUE FOR INFORMATION FOR COUNCIL REF	2017.07.14

Client:

JQZ

Commercial 3,
1 Belmore Street Burwood
NSW, 2134

T +612 9378 1000
F +612 9745 2666

PTW Architects

T +612 9232 5877
F +612 9221 4139

Level 13, 9 Castlereagh St
Sydney NSW Australia 2000

NSW Nominated Architects
S Parsons Architect No. 8008
D Jones Architect No. 4778
A Palmer Architects No. 5578
A Resser Architect No. 5057

Do not scale from drawings.
Verify all dimensions on site before commencing work.
Copying or reproduction of this drawing is strictly prohibited without the consent of
Prodder, Trench & Walker P/L.

The Architect shall not be liable for any loss or claims whatsoever arising from or in
respect of any errors arising or resulting from data transferred from the
computer system of the Architect to systems of the Client or other Consultants.
The recipient of the data shall be responsible for checking accuracy and completeness
of data received.

Any use of the electronic data in part or whole shall be at the users risk.
The CAD files and their contents are solely representations of the Project information
and cannot be relied upon beyond the representation shown on the PDF versions of the
drawings as provided by the Architect.

Project:

152-200 and 202-206 Rocky Point
Road Kogarah

Title:

FACADE ELEVATIONS (BUILDING E)

0	1	2		5	8m
Scale:	1:100	@A1	Date:	14/07/17	Job No:
					PA012984
Dwg No:	DA-712		Revision:	5	
Status:	DEVELOPMENT APPLICATION				



01_FACADE ELEVATION-LINK BUILDING CD_NORTH



02_FACADE ELEVATION-LINK BUILDING CD_SOUTH



03_FACADE ELEVATION-BUILDING F&G_NORTH



04_FACADE ELEVATION-BUILDING F&G_SOUTH

Key Plan:

COORD.
SYSTEM MGA

GENERAL ABBREVIATIONS

B1

FACE BRICK OR SIMILAR

G1

WINDOW GLAZING CLEAR SET GLASS

G2

BALUSTRADE GLAZING CLEAR
TOUGHENED GLASS

G3

BALUSTRADE GLAZING OPAQUE
TOUGHENED GLASS

M1

ALUMINIUM MESH PANEL - WHITE PAINT
OR SIMILAR

PC1

ALUMINIUM SLAT - POWDER COATED
ALUMINIUM - DARK GREY OR SIMILAR

PC2

LOUVER - POWDER COATED ALUMINIUM
- LIGHT GREY OR SIMILAR

PC3

LOUVER - POWDER COATED ALUMINIUM
- OFF WHITE OR SIMILAR

PC4

LOUVRE - POWDER COATED ALUMINIUM
TIMBER TEXTURE OR SIMILAR

PC5

WINDOW FRAME - POWDER COATED
ALUMINIUM - DARK GREY OR SIMILAR

PC6

PERGOLA - POWDER COATED
ALUMINIUM - TIMBER TEXTURE OR
SIMILAR

R1

RENDER AND PAINT FINISH - OFF WHITE

R2

RENDER AND PAINT FINISH - LIGHT
GREY

No.	Amendment	Date
1	PRELIMINARY ISSUE FOR COORDINATION	2016.10.21
2	PRELIMINARY ISSUE FOR COORDINATION	2016.11.11
3	ISSUE FOR COORDINATION	2016.12.06
4	DA SUBMISSION	2016.12.09
5	ISSUE FOR INFORMATION FOR COUNCIL REF	2017.07.14

Client:

JQZ

Commercial 3,
1 Belmore Street Burwood
NSW, 2134

T +612 9378 1000
F +612 9745 2666

PTW Architects

T +612 9232 5877
F +612 9221 4139

Level 13, 9 Castlereagh St
Sydney NSW Australia 2000

NSW Nominated Architects
S Parsons Architect No. 8008
D Jones Architect No. 4778
A Palmer Architects No. 6578
A Riser Architect No. 5057

Do not scale from drawings.
Verify all dimensions on site before commencing work.
Copying or reproduction of this drawing is strictly prohibited without the consent of
Produce Theory & Walker Pty. Ltd.

The Architect shall not be liable for any loss or claims whatsoever arising from or in
respect of any errors or omissions resulting from the use of the drawings or the information
contained therein, whether or not such errors or omissions are caused by the negligence of the
Architect or any of its employees, agents, consultants or subcontractors.

Any use of the electronic data in part or whole shall be at the users risk.
The CAD files and their contents are solely representations of the Project information
and cannot be relied upon for legal or regulatory purposes. The drawings shown on the PDF versions of the
drawings as provided by the Architect.

Project:

152-200 and 202-206 Rocky Point
Road Kogarah

Title:

FACADE ELEVATIONS (LINK
BUILDING CD & BUILDING F & G)

0	1	2	5	8m
Scale:	1:100	Date:	14/07/17	Job No:
	@A1			PA012984
Dwg No:	DA-713	Revision:	5	
Status:	DEVELOPMENT APPLICATION			